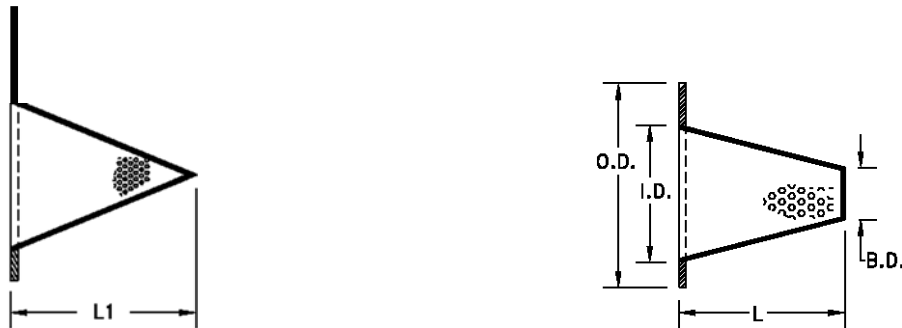


RADAFAB STRAINER DIMENSIONS

CONE TYPE PERFORATED (WITCHES HAT) BASKET TYPE PERFORATED (PILGRIM HAT)



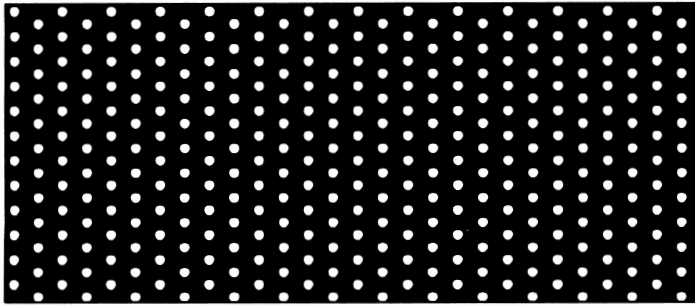
FLANGE DIMENSIONS						
NOMINAL PIPE SIZE	I.D.	O.D.				
		150#	300#	600#	900#	1500#
1 1/2"	1.250"	3.250"	3.625"	3.625"	3.750"	3.750"
2"	1.750"	4.000"	4.250"	4.250"	5.500"	5.500"
2 1/2"	2.250"	4.750"	5.000"	5.000"	6.375"	6.375"
3"	2.750"	5.250"	5.750"	5.750"	6.500"	6.750"
4"	3.750"	6.750"	7.000"	7.500"	8.000"	8.125"
5"	4.625"	7.625"	8.375"	9.375"	9.625"	9.875"
6"	5.375"	8.625"	9.750"	10.375"	11.250"	11.000"
8"	7.375"	10.875"	12.000"	12.500"	14.000"	13.750"
10"	9.375"	13.250"	14.125"	15.625"	17.000"	17.000"
12"	11.000"	16.000"	16.500"	17.875"	19.500"	20.375"
14"	12.250"	17.375"	19.000"	19.000"	20.375"	22.625"
16"	14.000"	20.125"	21.125"	21.875"	22.500"	
18"	15.750"	21.250"	23.375"	23.750"	25.000"	
20"	17.500"	23.500"	25.625"	26.625"		
24"	21.250"	27.875"	30.375"	30.875"		
30"	28.125"	34.375"	37.125"	37.875"		

CONE LENGTH "L1"					BASKET LENGTH "L"				
NOMINAL PIPE SIZE	100" C-1	150" C-1.5	200" C-2	300" C-3	NOMINAL PIPE SIZE	100" B-1	150" B-1.5	200" B-2	300" B-3
1 1/2"	3.500"	4.500"	6.000"	9.000"	1 1/2"	2.000"	2.500"	3.500"	5.000"
2"	4.000"	6.000"	8.000"	11.000"	2"	2.500"	3.000"	4.000"	6.000"
2 1/2"	4.000"	6.000"	8.000"	11.000"	2 1/2"	2.500"	3.000"	4.500"	6.000"
3"	5.000"	7.000"	9.000"	13.000"	3"	3.000"	4.500"	6.000"	8.000"
4"	8.000"	10.000"	12.000"	18.000"	4"	4.000"	5.000"	7.000"	11.000"
5"	8.000"	11.000"	14.000"	22.000"	5"	4.500"	7.000"	9.000"	14.000"
6"	9.000"	13.000"	18.000"	25.000"	6"	5.500"	8.000"	11.000"	17.000"
8"	12.000"	17.000"	23.000"	33.000"	8"	7.000"	11.000"	14.000"	21.000"
10"	14.000"	21.000"	28.000"	41.000"	10"	8.000"	13.000"	17.000"	26.000"
12"	16.000"	25.000"	34.000"	49.000"	12"	10.000"	15.000"	20.000"	31.000"
14"	18.000"	27.000"	36.000"	53.000"	14"	10.000"	16.000"	22.000"	33.000"
16"	21.000"	31.000"	40.000"	61.000"	16"	12.000"	19.000"	24.000"	37.000"
18"	24.000"	35.000"	46.000"	68.000"	18"	14.000"	21.000"	27.000"	41.000"
20"	26.000"	38.000"	51.000"	76.000"	20"	16.000"	24.000"	31.000"	48.000"
24"	31.000"	45.000"	61.000"	90.000"	24"	18.000"	28.000"	37.000"	57.000"
30"	38.000"	57.000"	76.000"	114.000"	30"	22.000"	34.000"	46.000"	71.000"
36"	46.000"	68.000"	91.000"	130.000"	36"	27.000"	42.000"	58.000"	85.000"

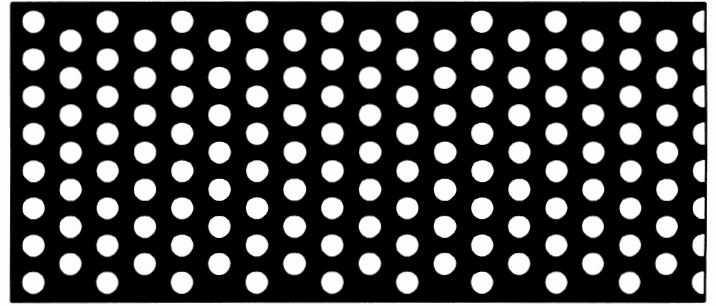
NOTES:

1. STANDARD PERFORATED MATERIAL THICKNESS: 16 GAUGE. FLANGE Rings: 11 GAUGE
2. SPECIAL LENGTHS ARE AVAILABLE.
3. B.D. EQUALS 1/2 NOMINAL PIPE SIZE.
4. NO CRN AVAILABLE ON TEMPORARY CONICAL/ BASKET TYPE STRAINERS (AS OF MARCH 2012)

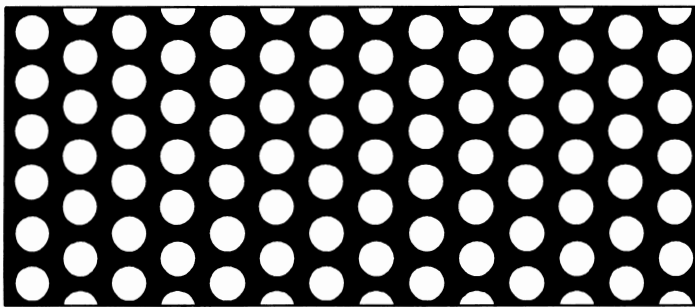
BASE MATERIALS FOR STRAINERS



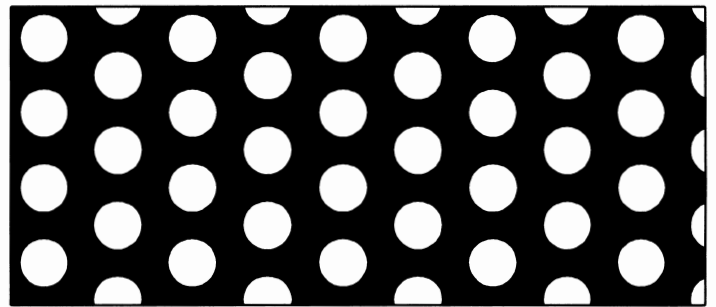
1/16"∅ on 1/8" ctrs.



1/8"∅ on 3/16" ctrs.



3/16"∅ on 1/4" ctrs.



1/4"∅ on 3/8" ctrs.

PERFORATED MATERIALS

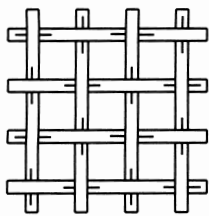
Gage	Perforation	Holes/sq. in.	% of Open Area	Material Range
20	1/16"∅ on 1/8" ctrs.	74.0	22.7%	Carbon Steel, 304SS, 316SS
16	1/8"∅ on 3/16" ctrs.	33.0	40.3%	Carbon Steel, 304SS, 316SS 304L, 316L, Monel
16	3/16"∅ on 1/4" ctrs.	18.5	51.0%	Carbon Steel, 304SS, 316SS
16	1/4"∅ on 3/8" ctrs.	8.0	40.3%	Carbon Steel, 304SS, 316SS
14	1/8"∅ on 3/16" ctrs.	33.0	40.3%	Carbon Steel, 304SS, 316SS
14	3/16"∅ on 1/4" ctrs.	18.5	51.0%	Carbon Steel, 304SS, 316SS
14	1/4"∅ on 3/8" ctrs.	8.0	40.3%	Carbon Steel, 304SS, 316SS
12	1/8"∅ on 3/16" ctrs.	33.0	40.3%	Carbon Steel
11	1/8"∅ on 3/16" ctrs.	33.0	40.3%	304SS, 316SS
11	1/4"∅ on 3/8" ctrs.	8.0	40.3%	Carbon Steel, 304SS, 316SS

OTHER PERFORATIONS AVAILABLE UPON REQUEST.

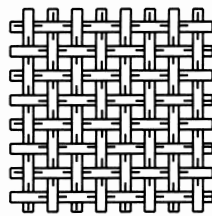
WIRE MESH TYPE BASE MATERIAL (Available From Stock)

Mesh	Wire Diameters		Width of Opening		% of Opening	Material Range
	in.	mm.	in.	mm.		
2	.063	1.6	.437	11.10	76.4%	Carbon Steel, 304SS, 316SS
3	.063	1.6	.270	6.86	65.5%	Carbon Steel, 304SS, 316SS
4	.063	1.6	.187	4.75	56.0%	Carbon Steel, 304SS, 316SS
5	.063"	1.6	.137	3.48	46.9%	Carbon Steel, 304SS, 316SS
6	.047	1.19	.120	3.50	51.8%	Carbon Steel, 304SS, 316SS
8	.047	1.19	.078	1.98	38.9%	Carbon Steel, 304SS, 316SS

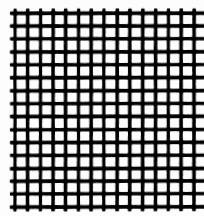
OTHER SIZES AND MATERIALS AVAILABLE UPON APPLICATION.



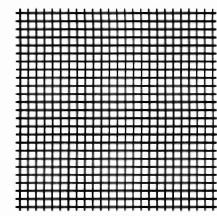
4 Mesh
.072



8 Mesh
.047



10 Mesh
.025



20 Mesh
.016

WIRE MESH LINER MATERIAL (Available From Stock)

Mesh	Wire Diameters		Width of Opening		% of Opening	Material Range
	in.	mm.	in.	mm.		
10	.025	.640	.075	1.91	56.3%	304SS, 316SS
20	.016	.406	.034	.86	46.2%	304SS, 316SS
30	.013	.330	.020	.52	37.1%	304SS, 316SS
40	.010	.254	.015	.38	36.0%	304SS, 316SS
50	.009	.229	.011	.28	30.3%	304SS, 316SS
60	.0075	.191	.009	.23	30.5%	304SS, 316SS
80	.0055	.140	.007	.19	31.4%	304SS, 316SS
100	.0045	.114	.006	.14	30.3%	304SS, 316SS

OTHER SIZES AND MATERIALS AVAILABLE UPON APPLICATION.

FLOW RATE GPM	TYPE "C" CONE STRAINER																						
	PRESSURE DROP OF CLEAN VS. WATER FLOW RATE																						
	COLUMN 1 UNDER EACH PIPE SIZE=100% OPEN AREA/COLUMN 2=200% OPEN AREA																						
	2"		3"		4"		6"		8"		10"		12"		14"		16"		18"		20"		
1	2	1	2	1	2	1	2	1	2	1	2	1	2	1	2	1	2	1	2	1	2		
100	3.7	3																					
200	17	11	2.4	2.1	1.2	1.1																	
300	40	24	6	4.5	2.9	2.5																	
400	72	40	12	8	5.4	4.2																	
500		60	18	12	9	6.2																	
600		83	27	17	14	8.8	1.2	1.1															
700			37	23	18	13	1.7	1.6															
800			50	28	25	16	2.3	2															
900			65	35	32	18	2.9	2.5	1.1	1.1													
1000			80	43	40	24	3.6	3	1.5	1.4													
2000						82	17	11	6.1	3.7	2	1.8											
3000							39	24	16	10	4.9	3.9	2.1	2	1.6	1.5							
4000							72	40	29	18	9	6.6	4	3.5	2.8	2.4	1.7	1.5					
5000								60	45	26	16	10	6.5	5.1	4.6	3.7	2.5	2.3	1.5	1.4			
6000								73	68	37	22	14	9.5	7.1	7	5	3.8	3.1	2.2	1.9	1.5	1.3	
7000									95	49	31	19	15	9.5	9.5	6.9	5.2	4.1	3	2.6	1.9	1.9	
8000										75	41	24	19	12	14	9	7	5.2	4	3.2	2.7	2.3	
9000											52	29	24	16	17	12	9	6.7	5.2	4	3.3	2.8	
10000												68	35	30	19	21	14	12	8	6.6	5	4.2	3.4

CORRECTION FACTOR:
 FOR LIQUIDS MORE VISCOUS THAN
 WATER OR WHERE WIRE CLOTH
 LINER IS ADDED MULTIPLY PRESSURE
 DROP IN CHARTS BY:

VISCOSITY (SSU)	PERFORATED (1/8" HOLES)	PERFORATED W/WIRE CLOTH		
		40 MESH	60 MESH	80 MESH
30	1.00	1.32	1.53	1.62
270	1.30	1.61	1.83	2.00
385	1.44	1.76	2.00	2.20
500	1.58	1.92	2.13	2.41
1000	1.66	2.22	2.41	2.63
2000	1.86	2.41	2.72	2.91

FLOW RATE GPM		TYPE "B" BASKET STRAINER																				
		PRESSURE DROP OF CLEAN VS. WATER FLOW RATE																				
		COLUMN 1 UNDER EACH PIPE SIZE=100% OPEN AREA/COLUMN 2=200% OPEN AREA																				
		2"		3"		4"		6"		8"		10"		12"		14"		16"		18"		20"
1	2	1	2	1	2	1	2	1	2	1	2	1	2	1	2	1	2	1	2	1	2	
100	3.2	2.7	2.1	1.7																		
200	15	12	4.8	3.8	1.1																	
300	32	27	9	7	2.5	1.9																
400	58	46	15	12	4.5	3.5																
500	91	72	21	17	7.1	5.6																
600			29	23	11	8	1.2															
700			38	30	15	12	1.6	1.2														
800			47	37	19	16	2	1.7														
900			60	46	25	19	2.6	2	1													
1000					31	25	3.2	2.5	1.2													
2000							14	11	5	3.7	1.8	1.5										
3000							31	25	12	9	4.2	3.3	1.9	1.6	1.4	1						
4000							56	45	21	17	7.7	6	3.5	2.8	2.5	2	1.5	1.1				
5000							91	70	33	26	13	9.3	5.6	4.5	3.9	3	2.2	1.8	1.3	1		
6000									48	38	18	15	8.1	6.3	5.6	4.2	3.3	2.5	1.9	1.5	1.2	1
7000									68	50	25	19	11	8.8	8	6	4.5	3.4	2.6	2	1.8	1.4
8000									88	68	32	25	16	12	11	8	6	4.5	3.4	2.7	2.2	1.8
9000										85	41	32	19	16	13	10	7.3	5.8	4.4	3.3	2.8	2.2
10000											50	39	23	19	17	13	9.3	7	5.5	4.1	3.5	2.7

CORRECTION FACTOR:
 FOR LIQUIDS MORE VISCOUS THAN
 WATER OR WHERE WIRE CLOTH
 LINER IS ADDED MULTIPLY PRESSURE
 DROP IN CHARTS BY:

VISCOSITY (SSU)	PERFORATED (1/8" HOLES)	PERFORATED W/WIRE CLOTH		
		40 MESH	60 MESH	80 MESH
30	1.00	1.32	1.53	1.62
270	1.30	1.61	1.83	2.00
385	1.44	1.76	2.00	2.20
500	1.58	1.92	2.13	2.41
1000	1.66	2.22	2.41	2.63
2000	1.86	2.41	2.72	2.91